



**IGNITING INDIA'S FUTURE WITH**

**AI-DRIVEN SUPERPOWERS**

Uniting policy and technology to build future-ready graduates.





# Shaping the next era of learning with SAP

AI is transforming every industry. For students, mastering digital and enterprise technologies is no longer optional—it's essential to stay relevant in the future workforce.

In alignment with the vision of the **National Education Policy (NEP)**, SAP has designed the **SAP Graduate Program** to bring global enterprise learning into universities across India. Inspired by NEP's focus on skill-based and industry-aligned education, the initiative introduces tailored curricula such as **B.Tech. in Cloud ERP** and **MBA in Cloud ERP Management**, supported by project-based internships and AI-driven upskilling resources, empowering students to innovate and adapt in the digital economy.





# About SAP

As a **global leader in enterprise application software**, SAP empowers organizations to operate more efficiently and sustainably.



**84%**

of the world's transaction revenue touches an SAP system.



**98**

of the top 100 most-valued global brands are SAP customers.



**97%**

of the world's mobile subscribers are reached through SAP mobile solutions.

With **109,000+ employees** in **157+ countries** and **24,000+ partners**, SAP fuels innovation, sustainability, and digital transformation worldwide.

**Source:** SAP Global Communications, July 22, 2025







# SAP in higher education

Through its education initiatives, SAP enables universities to align curricula with real-world industry needs. By integrating enterprise technologies and intelligent systems into classrooms, students gain hands-on exposure to business processes, analytics, and AI.

**500,000+**

Global learners  
trained

**200+**

Premium universities  
partnered globally

**250+**

Industry-relevant  
courses in SAP  
Learning Hub,  
student edition

**Source:** IDC MarketScape: Worldwide IT Education & Training 2013 Vendor Analysis

## Getting Certified with SAP

With an SAP certification, students can gain visibility in job applications and fast-track career progression:

**73%**

salary or wage  
increases

**70%**

Higher  
productivity

**63%**

Job promotion  
prospects

**72%**

Increased ability  
to innovate

**Source:** Pearson Vue, "2025 Value of IT Certification Candidate Report," 2025



# SAP penetration at scale

## SAP globally and locally



**30M+** people work from anywhere—enabled by **SAP cloud solutions**



**82%+** of global medical devices—produced by **SAP customers**



**Indian Railways** run on SAP



**Indian Defence** — Finance & HR run on SAP.



**95K+** cars/day — manufactured by **SAP customers**



**82%+** of global coffee & tea — produced by **SAP customers.**



**18/20** major Indian refineries run on SAP



SAP customers process **1.35 Cr. litres** of milk every day — supporting **32 lakh farmers.**

## Improving employability index of students



Addressing the rapidly growing industrial demands across the globe



Bridging the academics industry gap



Creating a sustainable and financially independent workforce



Building a knowledge based economy with cost effective programs

# SAP graduate program

The SAP Graduate Program brings specialized **B.Tech. Cloud ERP** and **MBA Cloud ERP Management** courses into university curricula, complemented by SAP-led business case studies and expert training.

## PROGRAM OVERVIEW



### Industry Ready

- 60% of the curriculum focuses on multiple SAP technologies;
- 40% covers core engineering/MBA topics.



### SAP trainers

Program fully delivered by SAP experts and consultants..



### Three certifications

Degree with three SAP global certifications during the course period.



### Internships

Opportunities in the SAP partner ecosystem including a guaranteed stipend.

**B.Tech.:** Final year dedicated to internship.

**MBA:** Final semester internship for six months.

**PGDERP Executive Program:** 12-month hybrid program for professionals with 1–5 years of functional experience, specializing in Finance, HR, Supply Chain, and Production.



### Job assistance

Continued support until the student secures employment, through the **SAP India Career Portal**.



# SAP add-on courses

The SAP add-on Certification program offers MBA/B.Tech. students comprehensive training in SAP S/4HANA modules (Sales/Finance/HR/ABAP Development) with:



SAP Learning Hub  
cloud access



160 hours ILT  
classroom training



160 hours live  
server access



1 SAP Global  
Certification

## B.Tech

Certification	Course Content
SAP Certified Associate Backend Developer (ABAP Cloud)	SAP cloud application program model
	CICD
	SAP BTP runtimes
	SAP S/4HANA cloud extensibility
	Building side-by-side extensions on SAP BTP

## MBA Finance

Certification	Course Content
SAP Certified Associate SAP S/4HANA Cloud Private Edition, Financial Accounting	Overview and deployment of SAP S/4HANA
	General ledger accounting
	Accounts payables and receivables
	Asset accounting
	Financial closing
	Organizational assignments and process integration

## MBA HR

Certification	Course Content
SAP Certified Associate - SAP SuccessFactors Employee Central Core	Employee central core
	Position management
	HR transaction rules
	Approval for self service
	Configuring SAP SuccessFactors employee central core

## MBA Sales/Marketing

Certification	Course Content
SAP Certified Associate - SAP S/4HANA Cloud Private Edition, Sales	Managing clean core
	Sales documents (Customizing)
	Pricing and condition technique
	Shipping process and customizing
	Billing process and customizing, master data

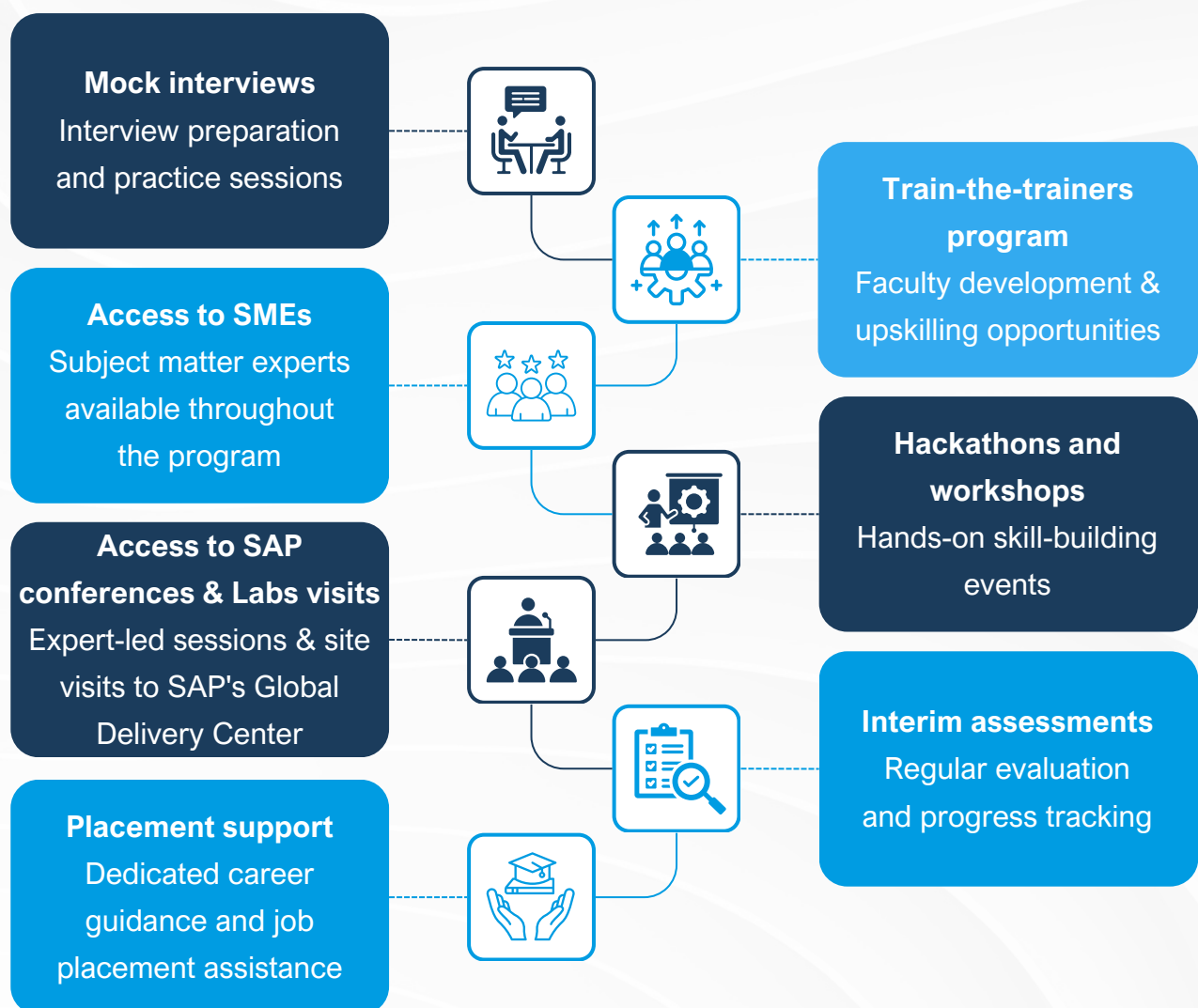




# Comprehensive support ecosystem

Our SAP skilling program goes beyond classroom training, supported by strategic partnerships: **Indus Association** provides career guidance, industry insights, internships, and job opportunities; **SAP Labs India** offers mentored projects, campus hiring, and full time roles; and the **Industry Advisory Board (IAB)** guides curriculum relevance, mentoring, and industry linkage.

## Key support features



# Recruitment model

To address the growing talent needs of the industry, we adopt two strategic recruitment models, each designed to align skill supply with enterprise demand and ensure a seamless hiring experience for all stakeholders.

## In-house recruitment

Our **in-house model** is managed by a dedicated placement team, led by Resource Managers and Placement Coordinators, who oversee the entire recruitment lifecycle. From identifying new hiring demands to screening candidates, scheduling interviews, releasing offers, and coordinating onboarding—every step is handled with precision.

## Hire, train, and deploy

This model bridges the gap between industry expectations and the availability of job-ready professionals. Based on real-time market demands, candidates are selected and provided with intent or job confirmation letters before undergoing specialized training such as SAP skill development.

While the **Hire, Train and Deploy model** operates on confirmed hiring demand, the **In-House Recruitment model** remains agile, responding to evolving market requirements as they arise.

## Placement job portal

- Streamlined placement assistance exclusively for fresh SAP certified candidates.
- Aspirants and resource seekers connect through [www.sapindiacaer.com](http://www.sapindiacaer.com)
- Single destination for all SAP fresher requirements, supported by SAP's national network of partners.
- Reduces turnaround time and optimizes multiple interaction points.
- No commercials involved for any hiring through this portal.



## Our hiring partners



Deloitte.



accenture



Capgemini



Infosys



cognizant

Atos



LTI



Tech  
Mahindra



NTT DATA

# The future of upskilling starts here

AI skills are becoming essential across all SAP roles—from business users to developers. SAP simplifies the learning journey with two clear upskilling paths:



**Self-paced learning:** Free, role-based courses and guided learning journeys to upskill, reskill, and prepare for SAP skill validation—all at your own pace.



**Premium learning:** Instructor-led training through SAP Learning Class and SAP Learning Hub, offering live expert sessions, practice systems, and certification preparation.

## Structured pathways for students

Empower students with beginner-friendly SAP courses and gradually progress toward offering specialized learning paths designed for developers, consultants, administrators, and business users. Tailored learning paths include:



Getting started with  
AI fundamentals



Advancing with  
developer learning



Embedded AI for  
the enterprise

## SAP Learning Class

Expert-led, hands-on training with SAP-certified instructors. These paid courses combine live sessions, real-world case studies, and direct guidance from experts; ideal for learners ready to move beyond self-paced learning and gain practical experience.

## SAP Learning Hub

A premium, subscription-based platform that lets students and professionals learn anytime, anywhere.

- Live sessions with SAP experts
- AI practice systems for hands-on experience
- Access to certification prep and community forums

# SAP Certification in AI

Get certified as an **SAP Generative AI Developer**. Students can earn an industry-recognized certification that validates their expertise in applying AI with SAP tools and technologies.

Certified learners can:

- Build and implement AI solutions using **SAP Business AI, Joule, and Generative AI Hub**.
- Apply **governance, ethics, and best practices** for enterprise AI.
- Gain **global credentials** valued by employers.
- Stand out for roles in **AI-driven innovation** and **digital transformation**.



# Student success stories



Shweta Bose • 3rd+  
Certified SAP MM  
1d • Edited •

Hello everyone,

I'm glad to share that I've joined **IBM** as an Associate Consultant in the **SAP** domain. It's a great pleasure to kick start my corporate journey with **IBM** and I am looking forward to have an exciting journey full of great work and learning experience.

I would like to thank **Abha Bhardwaj** for the smooth virtual onboarding process. And I would also like to convey my sincere gratitude to **Odisha Skill Development Authority**, **TimesPro** and **SAP** for this wonderful opportunity.

#ibm #ibmer #newbeginning #firstjob #sapcommunity #sapconsultant #newjourney



Jyoti Ranjan Sahoo • 2nd  
Associate Business Analyst at Infosys  
2d • Edited •

Warm Greetings LinkedIn Family,

I'm elated to share that I have joined **Infosys** as a Associate Business Analyst in the **SAP** domain. I would like to thank **Anivesh Joshi** & the entire Talent Acquisition Team at **Infosys** for guiding through the onboarding process.

Thanks to the **Training and Placement Cell, CET Bhubaneswar**, **Dr. Saroj Kumar Pradhan** and **Samarjit Patnaik** for providing placement opportunities, even in these tough pandemic times. All placement coordinators have done a commendable job especially **Adyasha Dash** for being prompt at resolving every query.

All this wouldn't have been possible without the Unique vision of Shri **Naveen Patnaik** to Upskill the Engineering Graduates of Odisha through initiatives of **Odisha Skill Development Authority** in association with **TimesPro** to provide learning opportunities. So kudos to their Sincere Efforts.

Can't believe I am an **#infoscion** now. Dreams do come true. Looking forward to starting my new journey where I can learn, explore and contribute.

Wish me luck!

#infosys #firstjob #newbeginnings #infosyscareer #InfyDiaries #sapcommunity #sapconsultant #sapmm #AssociateBusinessAnalyst #sap #training #materialmanagement #newjourney #career #inspiration #togetherness

30 • 7 comments

## YAMAHA MOTOR SOLUTIONS INDIA



29-Jan-2025

To,  
Ms. Megha Saggu,  
H.No- 413/10, Street No-5, Gurunanak Pura West,  
Jalandhar, Punjab- 144009

SUB: OFFER LETTER

Dear Ms. Megha,

It is a matter of pleasure to inform you that you have been selected for the post of **Management Trainee(E0)**. During the interview you were appraised for the position and inducted for Yamaha Motor Solutions (I) Pvt Ltd. We feel that you can make a decided contribution to our efforts. Therefore, we would like to confirm our offer to you for the position as **Management Trainee(E0)** in Yamaha Motor Solutions (I) Pvt Ltd.

Your effective date of joining would be **04-Feb-2025** on below location:

## YAMAHA MOTOR SOLUTIONS INDIA



29-Jan-2025

To,  
Ms. Mani Kumari,  
Alahdud Chak,  
Distt. Kapurthala, Punjab-144626

SUB: OFFER LETTER

Dear Ms. Mani,

It is a matter of pleasure to inform you that you have been selected for the post of **Management Trainee(E0)**. During the interview you were appraised for the position and inducted for Yamaha Motor Solutions (I) Pvt Ltd. We feel that you can make a decided contribution to our efforts. Therefore, we would like to confirm our offer to you for the position as **Management Trainee(E0)** in Yamaha Motor Solutions (I) Pvt Ltd.

Your effective date of joining would be **04-Feb-2025** on below location:

## HCLTech

hcltech.com

March 7, 2025 Sukhman

Singh  
H no.2 new dashmesh Nagar  
Jalandhar  
Punjab  
India

Sub: Internship with HCL Technologies Limited

Dear Sukhman Singh,

Congratulations!

This is in response to your application for internship dated March 7, 2025.

We are pleased to offer you an internship in **HCL Technologies Limited** ("HCL" or "Company").

## HCLTech

hcltech.com

March 7, 2025

Harsimarpreet Kaur  
16-17 new basant nagar  
Near Aman nagar  
Punjab  
India

Sub: Internship with HCL Technologies Limited

Dear Harsimarpreet Kaur,

Congratulations!

This is in response to your application for internship dated March 7, 2025.

We are pleased to offer you an internship in **HCL Technologies Limited** ("HCL" or "Company").



# Bridging academia and industry

SAP's holistic approach creates a powerful synergy between education and employment, ensuring that learning translates directly into career opportunities.

## Value proposition for stakeholders

For Students	For Academia	For Industry	For University
<ul style="list-style-type: none"><li>• Industry-relevant curriculum</li><li>• Increased employability</li><li>• Understanding of business by bringing context to content</li></ul>	<ul style="list-style-type: none"><li>• Platform for knowledge creation, consumption, and calibration</li><li>• Avenues to try new pedagogies</li></ul>	<ul style="list-style-type: none"><li>• Lower cost to competency</li><li>• Lower time to competency</li><li>• Ready to billable resource</li></ul>	<ul style="list-style-type: none"><li>• Curriculum and pedagogy aligned to university objectives</li><li>• Active collaboration with industry keeping curriculum current</li></ul>

By integrating industry-aligned learning and AI-driven upskilling, universities can equip students with the skills and experience needed to thrive in a rapidly evolving digital economy.



## About

# Axicom Bharath Private Limited

Axicom Bharath Private Limited, part of the Axi Group of Companies, is a leading provider of advanced engineering and IT solutions. Renowned for its innovation and commitment to excellence, the company specializes in IoT Hardware Development, OT-IT Integration, SAP Education Partnerships, and the Si6 Platform for Education.

With deep expertise in software development, data analytics, and logistics solutions, Axicom empowers industries to achieve digital transformation by seamlessly connecting operational technologies with enterprise systems. Its intelligent IoT and automation solutions deliver real-time visibility, enhance operational efficiency, and enable data-driven decision-making across industrial and warehouse environments.

As an Authorized SAP Education Partner, Axicom collaborates with universities and academic institutions to deliver globally recognized SAP certification programs through the SAP Learning Hub. These programs are designed in alignment with the National Education Policy (NEP) to help institutions cultivate digitally skilled, industry-ready professionals, establish SAP Centers of Excellence, and promote faculty enablement.

In partnership with Si6 Associates, Axicom is spearheading the adoption of the Enterprise Platform for Education (EPE), a next-generation academic ERP built on the SAP Business Technology Platform (BTP). This initiative accelerates digital transformation in higher education, ensuring NEP compliance and seamless integration across institutional ecosystems.

Driven by innovation, collaboration, and sustainable growth, Axicom Bharath continues to bridge technology, education, and enterprise performance, creating a smarter, more connected, and future-ready ecosystem for industries and institutions alike.

*"Shape the future of your students with SAP-powered learning and global exposure. Let's build tomorrow's digital workforce—today."*

**Get in Touch** 📞 +91 94877 60947 ✉️ [admin@axicombharath.com](mailto:admin@axicombharath.com) 🌐 [www.axicombharath.com/sap](http://www.axicombharath.com/sap)

### Registered Office

#### 📍 Coimbatore

Plot No. 59, SF No. 104, Sri Nagar, Vilankurichi, Coimbatore, Tamil Nadu – 641035.

### Branch Offices

#### 📍 Coimbatore

No. 29B, First Floor, SRK Complex, Gandhi Street, Vilankurichi Post, Coimbatore, Tamil Nadu - 641035.

#### 📍 Bengaluru

No. 371, Gokula Pride, 4th Floor, J P Nagar - 8th Phase, Bengaluru, Karnataka - 560083.